

## LESSON PLAN

**Subject:** Grade 2 Science

**Lesson:** Life in the Garden

**Standard Addressed:** Summarize the life cycle of animals including:

- Birth
- Developing into an adult
- Reproducing
- Aging and Death (NC.2.L.1.1)

**Objective:**

- Students will be able to use information about life cycles to sequence stages of life for different animals in a garden.

**Materials Needed:**

- Device for showing *Life in the Garden* video
- “Life Cycles in the Garden” science activity

**Outline:**

- Prior to this lesson, students should be able understand that an animal’s life cycle begins at birth, involves development and reproducing, and ends in death.
- Show the video.
- Discuss the activity prompt and pictures.
- Students finish the activity independently or with a partner.

**Take It Further:** Students chose a garden animal and research how long each stage of development typically lasts in its life cycle. Students share their findings with the class.

**Cross-Curriculum Connection:** Students write an autobiography from the point of view of a garden animal.



## LIFE CYCLES IN THE GARDEN

Grade 2 Science

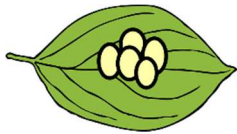
Student Name: \_\_\_\_\_ Date: \_\_\_\_\_

There are several different types of animals in the gardens at Old Salem. Here we will look at butterflies, birds and toads.

Use what you know about an animal's life cycle to help you fill in the blanks using these words: **Birth, Developing, Adult, Death.**

HINT: Sometimes you will write **Developing** more than once for an animal.  
ANOTHER HINT: The pictures are not in order of the stages!

### BUTTERFLIES



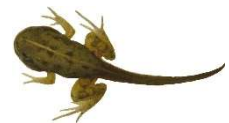
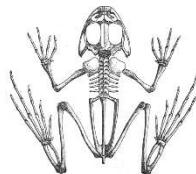
\_\_\_\_\_

### BIRDS



\_\_\_\_\_

### TOADS



\_\_\_\_\_

**BONUS:** On the back of this page, draw and label the life cycle of another animal that might live in the gardens.

## LIFE CYCLES IN THE GARDEN

Grade 2 Science

### Answer Key

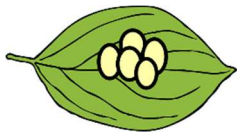
There are several different types of animals in the gardens at Old Salem. Here we will look at butterflies, birds and toads.

Use what you know about an animal's life cycle to help you fill in the blanks using these words: **Birth, Developing, Adult, Death.**

HINT: Sometimes you will write **Developing** more than once for an animal.

ANOTHER HINT: The pictures are not in order of the stages!

### BUTTERFLIES



Birth



Death



Developing



Developing



Adult

### BIRDS



Death



Birth



Adult

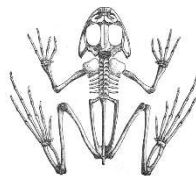


Developing

### TOADS



Adult



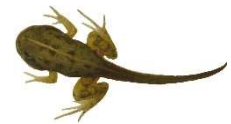
Death



Developing



Birth



Developing

**BONUS:** On the back of this page, draw and label the life cycle of another animal that might live in the gardens. (Answers will vary.)